

ANN ARBOR PUBLIC SCHOOLS

REIMAGINE

LEAD. CARE. INSPIRE.



Highlights of the Reimagine Learning Plan 2020-21

Ann Arbor Public Schools
Board of Education Study Session
July 22, 2020

Thank You, Core Fall Planning Team

Elementary	Middle	High
<ul style="list-style-type: none"> ● Andy Frankel - AAEA ● Tamala Bell - AAEA ● Fred Klein - AAEA ● Roberta Cole - AAEA ● Erica Hatt - TLC ● Eddie Latour - AAAA ● Bill Harris - AAAA ● Melita Alston - AAAA ● Michelle Pogliano - AAAA 	<ul style="list-style-type: none"> ● Chris Thomas - AAEA ● Stephan Hogan - AAEA ● Jennifer Daddow - AAAA ● Roberta Heyward - AAAA ● Jazz Parks - ED 	<ul style="list-style-type: none"> ● Kristal Jaaskelainen - AAEA ● Mike Jones - AAEA ● Marie Whybark - AAEA ● Dan Hyliard - AAAA ● Mike Summerton - AAAA ● Paul DeAngelis - ED
<ul style="list-style-type: none"> ● Robin Bailey - Fine Arts ● Marianne Fidishin - ED SISS ● Julieanne Muir - AAAA SISS ● Mary Weise - AAAA SISS ● Sandra Wong - AAEA SISS ● Sarah Pope - AAEA SISS 	<ul style="list-style-type: none"> ● Eve Claar - AAAA Athletics ● Jennifer Colby - AAEA K-12 Library ● Amy Deller - AAEA 6-12 Science ● Anthony Lauer - AAAA 6-12 Virtual 	

Thank You, Teaching and Learning Council

Kevin Karr, Teaching and Learning PK-12, IB
Dr. Marianne Fidishin, Special Education PK-Age 26
Heather Kellstrum, Executive Director, Instructional Technology

Elementary

Erica Hatt, Elementary ELA and Social Studies
Tony Stamm, Elementary Mathematics and Science

Secondary

Amy Deller, Secondary Science
Anne Marie Nicoll-Turner, Secondary Math & Comp. Science
Jared Aumen, Secondary Social Studies
Sarah Andrew-Vaughan, Secondary ELA
Karen Eisley, Career Tech Ed
Cindy Leaman, A2Virtual+ Academy Principal
Anthony Lauer, , A2Virtual+ Online Learning Coordinator

Student Supports

Cheryl Call, PK-12 English Learners
Tracye Johnson, Special Education
Julieanne Muir, Special Education
Mary Wiese, Special Education
Shalyn Furton, Autism, Special Education

Grants and Pupil Accounting

Joanna Johnson, Federal and State Grant Coordinator
Dan Berger, Assistant Director, Pupil Accounting and Research Services
Candy Rozelle-Williams, Assistant Director, Pupil Accounting and Research Services

Special Area/Elective

Robin Bailey, PK-12 Fine Arts
Jennifer Colby, PK-12 Librarians
Katie Hamilton, Elementary Physical Education
Marci Harris, World Languages K-12
Kim Jackson, Secondary Physical Education
Tom Pachera, PK-12 PLTW

Reimagine Learning Plan Essentials

Equity and Opportunity

Social
Emotional
Well-being

Access to
Learning

Student
Engagement

Social Justice

Rigor and
Relevance

Support and
Connection

Anti-Racism

Social Emotional Well-being

Our core mission is to ensure that each student is **healthy, safe, engaged, supported and challenged**. The following measures are a significant part of the fall reimagine instructional plans:

- **“Base Camp”** - Morning Meeting (elementary) and Advisory periods (secondary)
- **Screening tools** to identify students in need of additional support
- Sharing of **mental health support lines** and AAPS **counselor drop in** support
- **“Back to School” SEL-focused lessons** & ongoing teacher access to resources
- **“Connections+”** for students who need additional adult support
- **Parent support groups** and workshops

Access to Learning – All Phases

Whether in person or online, **Schoology** is our teaching and learning ecosystem, providing a one-stop shop for the following:

- **Communicating and collaborating** with staff, students and families
- Staying on track via **daily schedules and class agendas** with running deadlines
- Monitoring **attendance, assignment** submission, and **progress**
- Connecting to classrooms and accessing **live, synchronous instruction**
- **Receiving quality feedback** from teacher(s)
- **Schoology app** accessible from any device.

Each student will receive a **device** and **support with Internet service** and connection as needed.

Access to Learning – Instructional Model

Students will engage in the same rigorous, high quality courses and will follow the same schedule, whether in-person or online.

- Block Schedules with **three learning blocks or courses per day**.
- Students will attend some courses on **A days** and other courses on **B days**
- Learning blocks allow for **extended course time** every other day
- Instructional model designed to provide **full AAPS course curricula**
- Linear **courses aligned** to reinforce concepts from closure

Synchronous Engagement

Live interaction with teachers and peers is an important part of the learning process and experience.

In all phases of the plan, students will experience **synchronous instruction** and **engagement with peers**.

Rigor and Relevance

Robust and rigorous teaching and learning is a cornerstone of the AAPS. In each of the phases of the reimagine plan, families can expect:

- **Cyber-safe access** to all learning activities within Schoology
- **Live, engaging synchronous teaching** and learning
- **Structured school day** with students attending scheduled classes, whether online or in-person. Attendance mandatory.
- **Full course curriculum** to meet grade completion and graduation expectations
- **Block schedules**, three extended learning blocks per day
- Student **grades** and **report cards** issued
- The **same rigorous, high quality educational experience** whether online or in-person

Rigor and Relevance

Student engagement is critical to success. The following **culturally relevant** and **universal design** approaches are strong components in meeting the diverse needs of our students. Lessons are designed to support effective online learning and engagement.

Strategies Include:

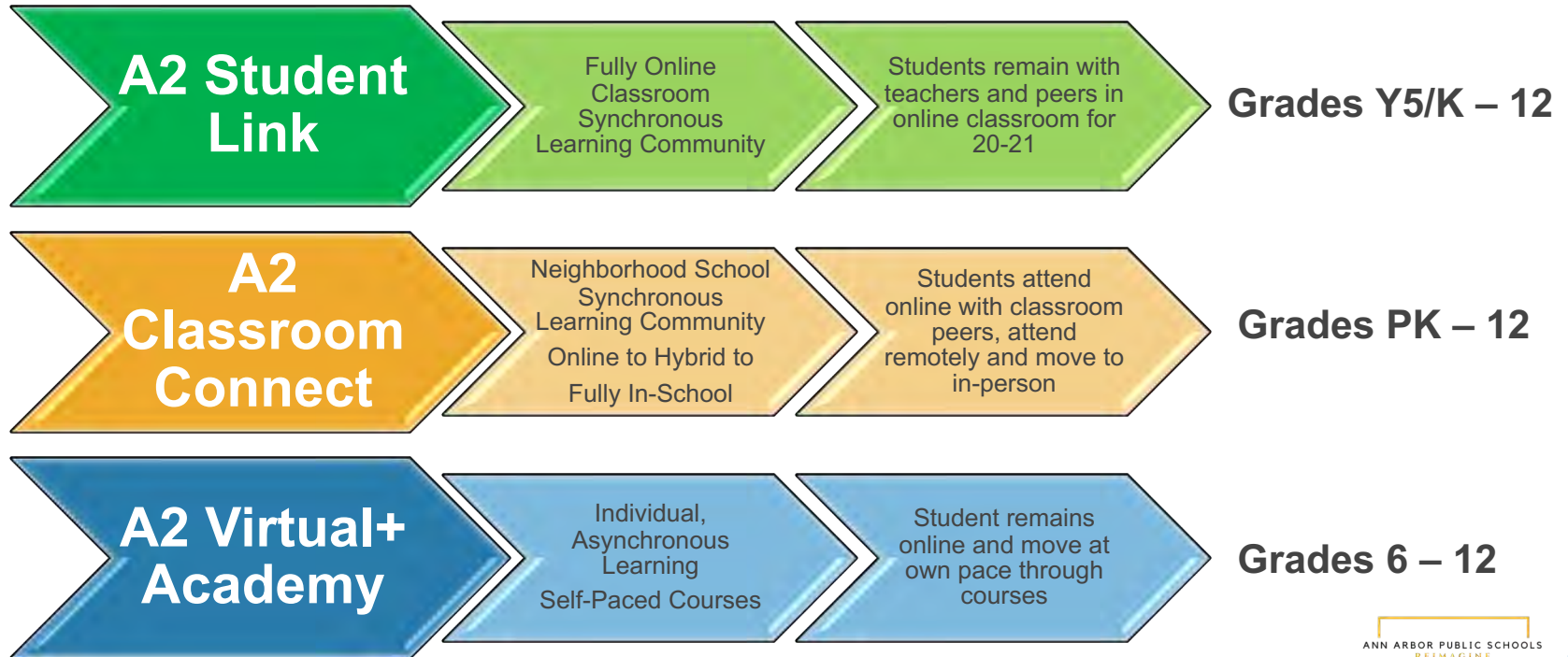
- Recognizing **funds of knowledge** students bring to the learning environment
- **Visual thinking models** to process and connect new concepts to funds of knowledge
- Meaningful **student discourse**, and peer interactions
- Multiple **levels of entry** into the lesson and curriculum
- Clear **learning targets**
- Quality, applicable **feedback**

Support and Connection

In every phase, we are committed to providing students with additional/supplemental learning opportunities, increased levels of support, and connection with our highly qualified professional staff. Support sessions will be scheduled and synchronous services either within the classroom environment or in small group settings.

- English language support
- Core academic and social/emotional interventions
- Community “Connection+” supports and networks for small groups
- Supplemental services for students with special needs

Fully Online Instruction



Fully Online Instruction



A2 Student Link - Fully Online, Online Classroom Community Option:

- Students attend class-paced courses with AAPS teachers and students from across the AAPS desiring a fully online learning community. As we proceed through the phases of the reopening, students will remain fully online.
- This option is available to Y5/K-12th grade students



A2 Classroom Connect - Fully Online, Neighborhood School Community Option:

- Students attend classes with teachers and peers at their neighborhood school. As we proceed through the phases of the reopening, students may remain fully online, participating in synchronous learning along with peers or attend blended, in-person learning according to specified schedules.
- This option is available to Y5/K-12th grade students.



A2 Virtual+ Academy - Fully Virtual, Self-paced Option:

- Students participate in self-paced, asynchronous, individualized courses. Supported by an A2 Virtual+ Academy teacher providing assignment feedback and office hours.
- This option is available to 6 – 12th grade students only.

All Phases – Sample Elementary Schedule

Time	Learning Activity	Mode of Instruction
8:30 - 9:00 (30 minutes)	Morning Meeting	Synchronous
9:00 - 10:30 (90 minutes)	Core Academics AM	Synchronous + Asynchronous
10:30 - 11:30 (60 minutes)	Specials / Intervention / Enrichment	Synchronous + Asynchronous
11:30 - 12:18 (48 minutes)	Lunch	Asynchronous
12:20 - 1:50 (90 minutes)	Core Academics PM	Synchronous + Asynchronous
1:50 - 3:00 (90 minutes)	Specials / Intervention / Enrichment	Synchronous + Asynchronous
3:00 - 3:23	Closing Circle/Dismissal	Synchronous

All Phases – Sample Secondary Schedule

Time	Learning Activity	Mode of Instruction
8:30 - 10:20 (110 minutes)	Learning Block 1	Synchronous + Asynchronous
10:30 - 12:20 (110 minutes)	Learning Block 2	Synchronous + Asynchronous
12:20 - 1:00 (40 minutes)	Lunch	Asynchronous
1:00 - 1:25 (25 minutes)	Advisory	Synchronous
1:25 - 3:20 (115 minutes)	Learning Block 4/Dismissal	Synchronous + Asynchronous

Blended Instruction **In-Person/Online**

When safe to do so, students attend in-person learning activities according to an **alternating in-person and online schedule**.

In accordance with health and safety recommendations, the blended schedule provides for **physical distancing** within the classroom.

In addition to distancing, students will be “**cohorted**”, with precautions to reduce exposure to staff and peers outside the cohort as much as possible.

Blended Instruction **In-Person/Online**

Cohorts remain together for in-person learning

MONDAY	TUESDAY	WEDNESDAY ALL Online	THURSDAY	FRIDAY
Cohort 1 Students IN-PERSON	Cohort 1 Students IN-PERSON	Cohort 1 and 2 ONLINE Asynchronous Learning	Cohort 2 Students IN-PERSON	Cohort 2 Students IN-PERSON
Cohort 2 Students ONLINE	Cohort 2 Students ONLINE	Cleaning/ Disinfecting	Cohort 1 Students ONLINE	Cohort 1 Students ONLINE

Full In-Person Instruction

In this phase, it is safe to return to **full in-person learning** and all scheduled courses will resume within the school setting.

Health and safety precautions and protocols remain in place in accordance with health guidance and the MI Safe Return to School plan.